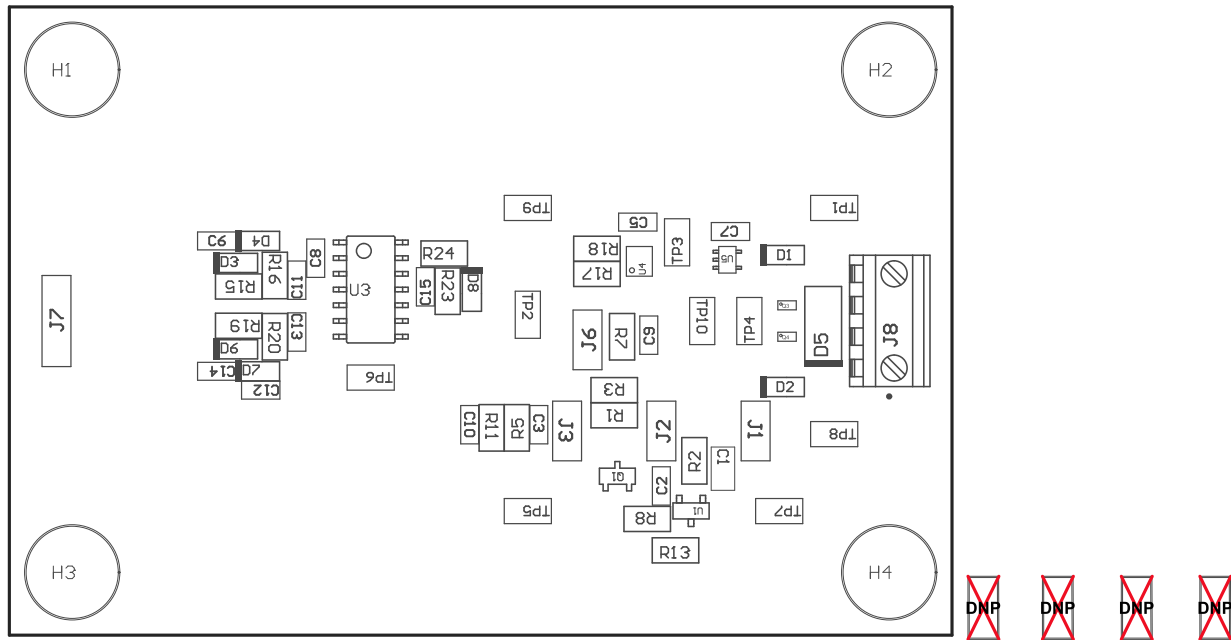


Z21 ■ These assemblies are ESD sensitive, ESD precautions shall be observed.

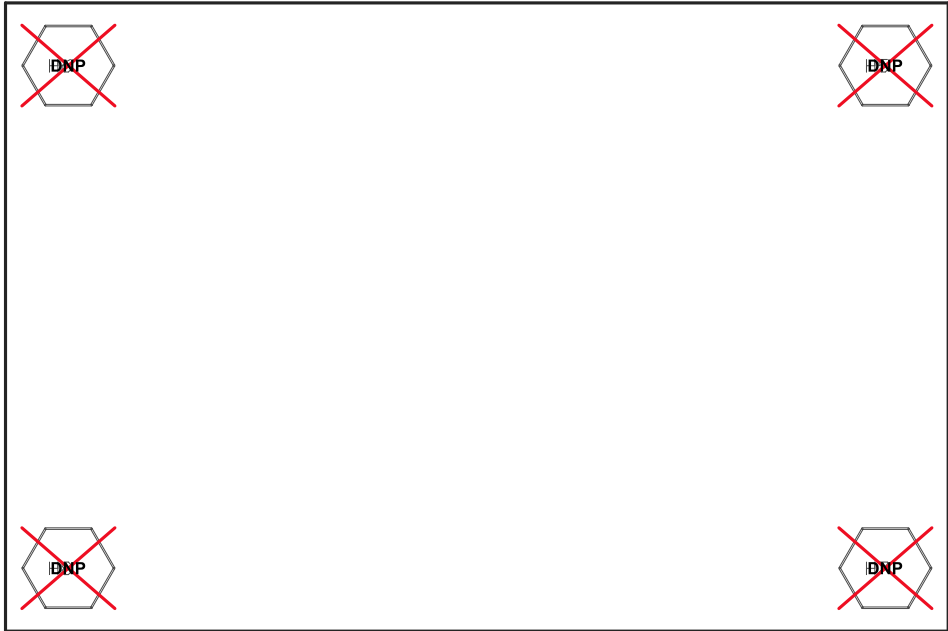
Z22 ■ These assemblies must be clean and free from flux and all contaminants. Use of no clean flux is not acceptable.

Z23 ■ These assemblies must comply with workmanship standards IPC-A-610 Class 2, unless otherwise specified.



COMPONENTS MARKED 'DNP' SHOULD NOT BE POPULATED.
ASSEMBLY VARIANT: 001

PCB VIEWED FROM TOP SIDE	BOARD #: ISA-EVM-01065	REV: Rev A	SUN REV: Not In VersionControl
	TID #: TIDA-01065		
PLOT NAME = Top Assembly Drawing	GENERATED : 8/25/2016	7:03:35 PM	TEXAS INSTRUMENTS



COMPONENTS MARKED 'DNP' SHOULD NOT BE POPULATED.
ASSEMBLY VARIANT: 001

PCB VIEWED FROM BOTTOM SIDE	BOARD #: ISA-EVM-01065	REV: Rev A	SVN REV: Not In VersionControl
	TID #: TIDA-01065		
PLOT NAME = Bottom Assembly Drawing	GENERATED : 8/25/2016 7:03:36 PM		TEXAS INSTRUMENTS